

# Tithes and Offerings



**In-person**  
Place in the blue offering  
bins in the lobby.



**Online**  
[tablelifechurch.org/giving](http://tablelifechurch.org/giving)



or text **GIVE**  
to 717-420-1600



**Mail**  
617 16th Street  
New Cumberland, PA 17070



**Auto pay.**  
Send directly from bank.


## CHURCH STAFF

**Kris Beckert, Lead Pastor**  
[pastorkris@tablelifechurch.org](mailto:pastorkris@tablelifechurch.org)

**Olivia Edmunds, Director of Family Ministries**  
[olivia@tablelifechurch.org](mailto:olivia@tablelifechurch.org)

**Cherrlyn Donahue, Church Administrator**  
[office@tablelifechurch.org](mailto:office@tablelifechurch.org)

 617 16<sup>th</sup> St • New Cumberland, PA

 717-774-6444

 [tablelifechurch.org](http://tablelifechurch.org)

 [facebook.com/tablelifechurch](https://facebook.com/tablelifechurch)

 [youtube.com/tablelifechurch](https://youtube.com/tablelifechurch)

 [instagram.com/tablelifechurch](https://instagram.com/tablelifechurch)

 [table\\_life\\_church](https://tiktok.com/table_life_church)



**TABLELIFE**  
**CHURCH**

CHURCH OF  THE NAZARENE



Order of Worship  
June 9, 2024

Third Sunday of Ordinary Time

## We Gather to Worship God

Welcome  
Worship in Song  
Call to Worship  
Worship in Song

## We Listen to the Word

Prayer  
Sermon Series: Conflicted  
Sermon: "Check the Reality"

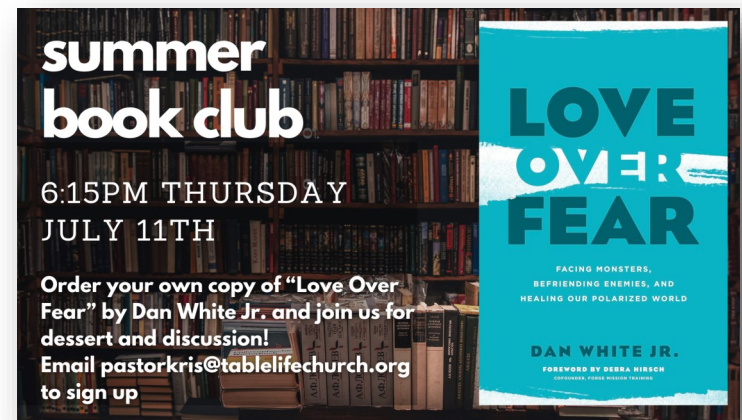
## We Come to the Table

Prayer of Confession and Consecration  
The Lord's Prayer  
We Eat and Drink Together  
We Celebrate the Eucharist in Song  
Prayer

## We Go to Live in the Reign of God

Community Life/Gossiping the Good Stuff  
Doxology  
Blessing and Sending

\*Words to music, responsive readings and  
The Lord's Prayer will be on the screen\*



For a complete list of ongoing ministries and upcoming events,  
please visit [tablelifechurch.org](http://tablelifechurch.org).

## Doggy Bag-

### Some questions to chew on:



1. What stood out to you the most from this message? What have you heard before? What was new or different?
2. Why is it important to check your reality before you have a conversation with someone about an issue?
3. When was a time that God used others to provide critical knowledge or perspective that helped you have a fuller understanding of a person or situation?
4. Do you have people in your life who would be classified as wise counsel and will be honest with you when you are wrong?
5. In a current problem, what story are you assuming or telling yourself that may not actually be true? Have you owned your part in the problem too?
6. From Part 1, what is one conversation you've been avoiding? This week, seek out the perspective of 1-3 people outside the situation who will be honest with you, stop ruminating on a story of "why," and own your part of what you should have done differently.

7.  
8.

## NEW HERE? NEED PRAYER?

TABLELIFE CHURCH  
Connection Card

I'm new here     I'm relationship quest  
 I have new contact information

Name \_\_\_\_\_  
Address \_\_\_\_\_  
Email \_\_\_\_\_  
Phone \_\_\_\_\_

How did you hear about us?  
 Social Media     Online  
 Referral by \_\_\_\_\_  
 Other \_\_\_\_\_

I would like to know more about or help with:  
 What it means to follow Jesus  
 Connect with other people  
 Serving  
 Help & Tech. Assistance  
Prayer Request \_\_\_\_\_

Please fill out a  
connection card located  
in the seats in front of  
you. Or you can fill one  
out online.



SCAN ME

TABLELIFE CHURCH

If you'd like to talk personally and confidentially w/Pastor Kris about your relationship with Christ, please email [pastorkris@tablelifechurch.org](mailto:pastorkris@tablelifechurch.org) or call

717-774-6444

## Conflicted "Part 1: Check the Reality" Pastor Kris Beckert

---

### I. Jesus' instructions on how to handle conflict:

*Matthew 18:15-18 If your brother or sister sins against you, go and point out their fault, just between the two of you. If they listen to you, you have won them over. <sup>16</sup> But if they will not listen, take one or two others along, so that 'every matter may be established by the testimony of two or three witnesses.' <sup>17</sup> If they still refuse to listen, tell it to the church; and if they refuse to listen even to the church, treat them as you would a pagan or a tax collector. <sup>18</sup> Truly I tell you, whatever you bind on earth will be bound in heaven, and whatever you loose on earth will be loosed in heaven.*

Part I. Have a conversation

Part II. Check \_\_\_\_\_

Part III. Know Your Outcome

### II. The Importance of \_\_\_\_\_

- In v.16, Jesus quotes an Old Testament passage:

*Deuteronomy 19:15 One witness is not enough to convict anyone accused of any crime or offense they may have committed. A matter must be established by the testimony of two or three witnesses.*

- Witnesses help provide \_\_\_\_\_
- Our point of view may not be completely right, but also not completely \_\_\_\_\_
- Others' perspectives may help define the reality before we talk to the person

### III. Checking the reality means:

#### 1. Seeking \_\_\_\_\_

*Proverbs 19:20 Listen to advice and accept discipline, and at the end you will be counted among the wise.*

- This is not complaining or \_\_\_\_\_
- This is someone \_\_\_\_\_ the situation that will give an honest perspective

#### 2. Telling \_\_\_\_\_

- Four stages when something makes us mad/upset:

1. We \_\_\_\_\_ and \_\_\_\_\_ it
2. We tell a \_\_\_\_\_ why they did it
3. We feel
4. We act

- How we feel & respond is usually based on stage 2
- Before jumping to conclusions, step back
- Ask "why would a decent and rational person do something like this?"

#### 3. Owning \_\_\_\_\_

- Assume you played a part in the problem
- What should you have done differently?

**Big Idea:** \_\_\_\_\_

\_\_\_\_\_